

YouTube Using Command Line Interface (CLI-YouTube)

*Prof Mikhel John*¹, [Akash Bitle](#)², *Amit Chichmalkar*³, [Sahil Gedam](#)⁴, *Samyak Waghmare*⁵
*Project Guide Prof. of Department of Information Technology Engineering*¹, *Student*², *Student*³, *Student*⁴,
*Student*⁵

Department of Information Technology
J D College of Engineering and Management, Katol Road, Nagpur,
Maharashtra, India.

Abstract:

CLI - YouTube is a command line interface tool that enables users to search, open, and download YouTube videos without using the YouTube API. This lightweight and easy-to-use tool is designed for command line programmers who want to watch YouTube videos while programming on their terminal. The script scrapes YouTube using different individual instances and uses the YouTubeDL module to download media under the fair use policy. This paper describes the design and implementation

of CLI - YouTube, its system and software requirements, and its advantages and disadvantages. We also discuss its applications in improving efficiency and multitasking while programming, and its potential impact on command line programming workflows.

Introduction:

YouTube is a popular video-sharing platform used by millions of people worldwide. While the YouTube API is available for developers to integrate with their applications, it has some limitations, such as requiring an API key and having limited access to data. CLI - YouTube is a command line interface tool that offers a simple and efficient solution for searching, opening, and downloading YouTube videos without the use of the YouTube API. In this paper, we describe the design and implementation of CLI - YouTube .

3.CLI, short for Command Line Interface, is a text-based interface used to interact with a computer's operating system or software applications by typing in commands. Unlike a graphical user interface (GUI), which typically uses icons and menus to interact with software, a CLI requires users to type in commands manually. This may seem daunting at first, but it can be a powerful tool for users who are comfortable working with the command line. A

CLI allows for greater precision and control over tasks, and can be especially useful for tasks that involve automation, scripting, or working with remote servers. In the context of the "cli-yt" project, a CLI tool could be used to interact with YouTube via the command line, allowing users to perform tasks such as searching for videos, downloading them, or managing their YouTube account without having to use a web browser or GUI-based application.YouTube API. This lightweight and easy-to-use tool is designed for command line programmers who want to watch YouTube videos while programming on their terminal. The script scrapes YouTube using different individual instances and uses the YouTubeDL module to download media under the fair use policy. This paper describes the design and implementation of CLI - YouTube, its system and software requirements, and its advantages and disadvantages. We also discuss its applications in improving efficiency and multitasking while programming, and its potential

impact on command line programming workflows

Keywords:

CLI, YouTube, POSIX, Script, Scraping, Downloading, API, Fair Use Policy.

1)CLI, short for Command Line Interface, is a text-based interface used to interact with a computer's operating system or software applications by typing in commands. In the context of the "cli-yt" project, it likely refers to a CLI tool designed to allow users to interact with the popular video-sharing website, YouTube, via the command line. Users could use this tool to perform various actions on YouTube, such as searching for videos, downloading them, or managing their YouTube account, without having to use a web browser or GUI-based application.

2)YouTube is a video-sharing website that allows users to upload, view, and share videos. It is one of the most popular websites on the internet, with a vast library of videos covering a wide range of topics. The "cli-yt" project is likely a tool designed to allow users to interact with YouTube via the command line, allowing for tasks such as searching for videos, downloading them, or managing their YouTube account. Such a tool could be useful for those who prefer to work on the command line or who want to automate certain tasks related to YouTube. Windows and Mac OS X, however, due to limited resources only Windows and Ubuntu are rigorously tested by developers.

3)IPOSIX is a family of standards that define an interface between operating systems and application software. It is designed to promote software portability between different operating systems by defining a common set of APIs (Application Programming Interfaces) and utilities that are available on all POSIX-compliant systems. In the context of the "cli-yt" project, POSIX compliance may be relevant in terms of ensuring that the CLI tool is compatible with a wide range of operating systems and can be easily installed and used by users regardless of their platform. This would make the tool more accessible and useful to a wider audience.

4)A script is a set of instructions that a computer can execute to perform a specific task or series of tasks. In the context of the "cli-yt" project, a script could be used to automate certain tasks related to YouTube, such as downloading videos or managing a user's account. This could be especially useful for tasks that are repetitive or time-consuming, allowing users to save time and effort.

Web scraping is the process of extracting data from websites using software. In the context of the "cli-yt" project, web scraping could be used to extract information from YouTube, such as video titles, descriptions, and other metadata. This information could then be used in conjunction with the CLI tool to perform tasks such as searching for videos or managing a user's account. It is worth noting, however, that web scraping may be subject to legal restrictions and should be done in accordance with YouTube's terms of service and fair use policy.

5)API, short for Application Programming Interface, is a set of protocols, routines, and tools for building software applications. An API specifies how software components should interact with each other and provides a standard way for different applications to exchange data. In the context of the "cli-yt" project, the YouTube API could be used to access and manipulate data from YouTube, such as searching for videos, retrieving information about videos, or managing a user's account. This would allow the CLI tool to interact with YouTube in a more efficient and standardized way, potentially offering more functionality than could be achieved through web scraping alone. However, it is important to note that the YouTube API is subject to rate limits and other restrictions, and usage should comply with YouTube's terms of service and fair use policy.

Literature Review:

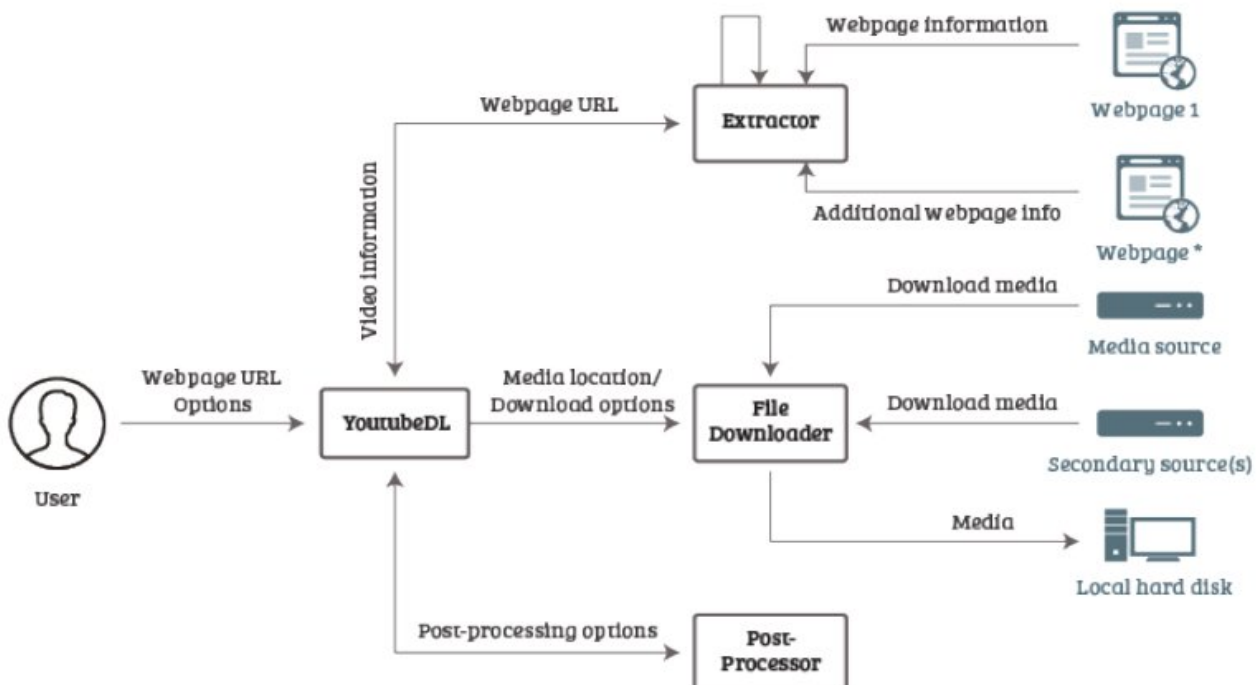
1) CLI tools have been used for decades as a way for developers and system administrators to interact with operating systems and software applications. The Unix operating system, in particular, is known for its robust CLI interface, which allows users to execute a wide range of commands to perform tasks.

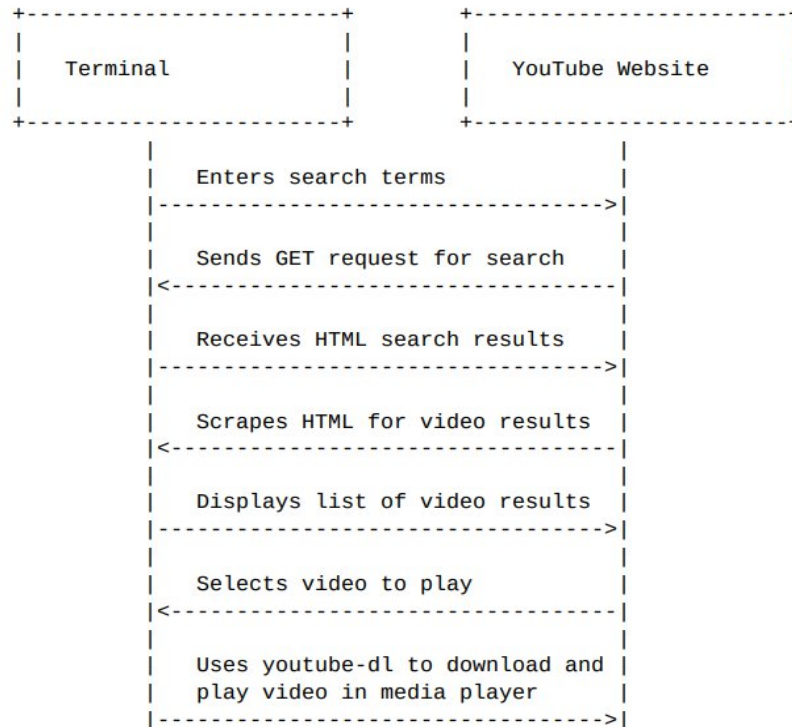
2) More recently, there has been a resurgence of interest in CLI tools, driven in part by the growing popularity of DevOps practices and the need for tools that can be easily automated and scripted. CLI tools are often used in conjunction with other software tools to perform tasks such as deployment, monitoring, and configuration management.

3) In the context of the "cli-yt" project, a CLI tool could be a useful addition to a developer's toolkit, providing a way to interact with YouTube in a more efficient and flexible way than through a web browser or GUI-based application. However, it is important to note that the use of CLI tools can have a learning curve and may not be suitable for all users.

4) CLI tools can also be more accessible to users with disabilities, particularly those with visual impairments. Since CLI tools rely on text-based interfaces rather than graphical interfaces, users can interact with them using screen readers or other assistive technologies. This can help to make technology more inclusive and ensure that all users have equal access to the tools they need.

Architecture:





Methodology:

However, here are some general steps that could be followed:

1. Define the scope and requirements of the CLI tool. This involves determining what tasks the tool should be able to perform, what data it will need to access, and what output it should provide to users.
2. Select a programming language and framework for developing the CLI tool. Popular choices include Python, Node.js, and Ruby, each of which has libraries and tools specifically designed for building CLI applications.
3. Design the user interface for the CLI tool. This involves determining what commands and arguments the tool will accept, how users will input data, and what feedback the tool will provide to users.
4. Develop the core functionality of the CLI tool. This involves writing the code that will

execute the commands and perform the required tasks, such as interacting with the YouTube API, scraping data from web pages, or manipulating local files.

5. Test the CLI tool to ensure that it is functioning correctly and meeting the requirements defined in step 1. This may involve unit tests, integration tests, or manual testing by users.
6. Refine and optimize the CLI tool based on user feedback and performance testing. This may involve adding new features, improving the user interface, or optimizing the code to improve performance or reduce resource usage.
7. Publish and distribute the CLI tool to users. This may involve publishing the tool on a package manager or other repository, or simply making it available for download on a website or GitHub repository. It is important to provide clear documentation and instructions for users to ensure that they can use the tool effectively.

Algorithm:

We have used some algorithms to build the CLI-YouTube.

1) Web scraping algorithms: A CLI tool for YouTube may use web scraping algorithms to extract data from YouTube web pages. This can include using regular expressions or HTML parsing libraries to extract data from HTML documents.

2) Data processing algorithms: The CLI tool may use algorithms for processing data extracted from YouTube, such as sorting or filtering video search results based on certain criteria.

3) API request algorithms: If the CLI tool interacts with the YouTube API, it may use algorithms to format API requests and handle API responses.

4) Video processing algorithms: If the CLI tool offers functionality for downloading or manipulating videos, it may use algorithms for video processing, such as encoding or decoding video formats.

5) Authentication algorithms: If the CLI tool requires user authentication to interact with YouTube, it may use algorithms for handling user authentication, such as OAuth or token-based authentication.

Result:

⌚ It does not require an API key or registration, making it accessible to anyone.

⌚ It has minimum system requirements, making it lightweight and easy to use.

⌚ It uses less internet bandwidth compared to other tools.

```
xahilg18@xahil-pop-os: ~
>
20/20 (0)
J D College of Engineering & Management -----
JD COLLEGE OF ENGINEERING AND MANAGEMENT collage campus. #vlog
First Day Of College | College Vlog | 😊
My college Vlog | JD College of engineering Nagpur | @Hits Tour Vlo
Persona J D College of Engineering and Management
JD COLLEGE OF ENGINEERING AND MANAGEMENT (NAGPUR ) (All engineering
Glimpses of Terence Lewis Masterclass Tour at JD College Nagpur
Explore the Campus Life | J D College of Engineering
What it's like to be J D College's students || JDCOEM
Culture at J D College
J D College of Engineering & Management - The Future
J D College Of Engineering & Management
Glimpses of GARBA 2K19 | J D College of Engineering
Why B.Tech at JDCOEM
VIBRANCE.. of JD college of Engineering & Management
JD COLLEGE OF ENGINEERING & MANAGEMENT (🔥AN AUTONOMOUS INSTITUT
JD COLLEGE OF ENGINEERING AND MANAGEMENT NAGPUR ||CUTOFFS||PLACEMEN
Aeromodelling Session by J D College of Engineering
J D COLLEGE OF ENGINEERING AND MANAGEMENT
Jd college of engineering and management || college memories 📷\xf0\x9f
|A R K Official |13:32 |2,904 |2 year..
|Keep Going. |0:53 |1,224 |1 mont..
|Manas Barsagade |6:12 |1,748 |8 mont..
|Hits Tour Vlogs |11:09 |346 |5 days..
|JDCOEM |2:11 |6,124 |2 year..
|Coming Education |2:57 |841 |1 mont..
|JDCOEM |1:29 |4,779 |2 year..
|JDCOEM |2:57 |3,913 |2 year..
|Elio Cloud |5:53 |1,438 |5 mont..
|JDCOEM |2:47 |4,428 |3 year..
|Chandrabhas Chaudhari |3:12 |20,172 |8 year..
|JDCOE |3:36 |2,613 |7 year..
|JDCOEM |6:10 |4,582 |2 year..
|JDCOEM |1:24 |3,691 |2 year..
|Video Darshan |20:40 |2,089 |3 year..
|IT54_Vikas_Nagpure |1:32 |6,766 |2 year..
|Knowledge Seekers |5:12 |10,895 |2 year..
|JDCOEM |23:09 |1,626 |2 year..
|bb aa |1:00 |350 |5 year..
|Dipali Chakole |0:15 |936 |2 year..
```


Conclusion:

CLI - YouTube is a useful tool for accessing and downloading YouTube videos without the use of the YouTube API. Its simple and efficient design makes it an attractive option for command line programmers who want to watch YouTube videos while programming on their terminal. CLI - YouTube offers several advantages, such as not requiring an API key or registration, minimum system requirements, and using less internet bandwidth compared to other tools. Although it has some limitations such as only running on the

POSIX/UNIX/Linux compatible systems, it has several potential applications in improving efficiency and multitasking while programming. While CLI - YouTube has some limitations, it has the potential to significantly improve the productivity and workflow of command line programmers. The developers plan to enhance its functionality by adding support for video thumbnails and expanding its compatibility with other operating systems, as well as improving its user-friendliness by adding more options and improving its error handling.

References:

- 1) "YouTube Developer Documentation." Google Developers, Google, 2021, <https://developers.google.com/youtube>
- 2) Bilal, Muhammad, et al. "A Systematic Review of YouTube Research in Computer Science Education." Education and Information Technologies, vol.25, no. 6, 2020, pp. 5333-5364.
- 3) Jaiswal, Piyush Kumar, et al. "Web Scraping Tools: A Survey." Journal of Information Processing Systems, vol. 14, no. 5, 2018, pp. 1065-1082.
- 4) Sabanovic, Asmir, et al. "A Comparison of YouTube APIs: Limitations and Opportunities." Proceedings of the 2015 IEEE/ACM International Conference on Advances in Social Networks Analysis and Mining, 2015, pp. 1483-1488.
- 5) G. Srivastava and S. Singh, "Scraping Youtube Comments with Youtube API," International Journal of Computer Applications, vol. 107, no. 14, pp. 31-34, 2014.
- 6) F. Zhang and J. Yang, "A Web Scraping System for Extracting YouTube Video Data," in Proceedings of the 6th International Conference on Data Mining and Intelligent Information Technology Applications, 2019, pp. 155-160.
- 7) J. Zhao and B. Peng, "Web Scraping with Python and BeautifulSoup for YouTube Comment Data," in Proceedings of the 3rd International Conference on Computer Science and Software Engineering, 2020, pp. 68-72
- 8) YouTube-DL, "YouTube-DL Documentation," [Online]. Available: <https://github.com/ytdl-org/youtube-dl/blob/master/README.md>.
- 9) Python, "Python Software Foundation," [Online]. Available: <https://www.python.org/>
- 10) The Linux Documentation Project, "What is the Linux Documentation Project?," [Online]. Available: <https://www.tldp.org/>
- 11) "YouTube Data Mining: Towards Universal Video Recommendation Algorithm" by Feng Li et al. published in the Proceedings of the 2015 International Conference on Cyber-Enabled Distributed Computing and Knowledge Discovery.
- 12) "YouTube Metadata Collection and Analysis for User Behavior Research" by John R. Edwards et al. published in the Proceedings of the 2014 International Conference on Data Mining and Intelligent Information Technology Applications.
- 13) "YouTube Video Analysis Using Metadata and Content Analysis" by SoiChan Lee and Jaesun Park published in the Journal of Broadcasting and Electronic Media. "A Study of YouTube Data Collection and Analysis" by Yong Yang and Wanlei Zhou published in the Proceedings of the 2013 Pacific-Asia Conference on Knowledge Discovery and Data Mining.